

Service-Bulletin

Technische Informationen



| | | | |
|----------------------|--------------------------|----------------------|------------------|
| Betrifft | AS 165 Luftfiltergehäuse | Herausgegeben | AS-Motor Service |
| Serie | AS 165 | Datum | 05.04.2019 |
| Betr. Modelle | AS 165 | Ende Aktion | |
| Betr. Teil | Luftfiltergehäuse | | |

Ursache:

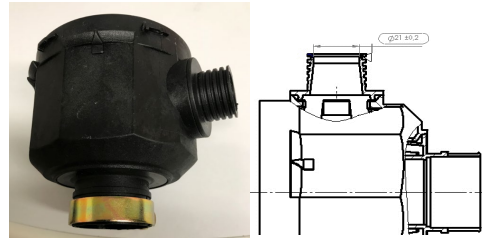
Zur einfachen Identifizierung der Luftfiltergehäuse.

Für den störungsfreien Lauf des Motors ist das richtige Luftfiltergehäuse wichtig.

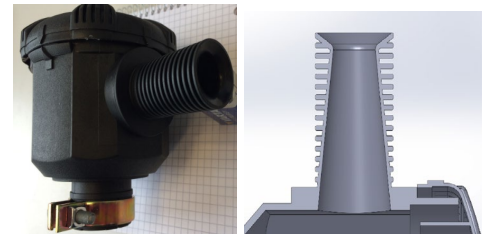
Lösung:

G00605055

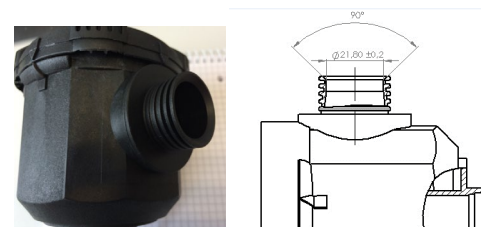
| | | |
|---------------|--------------|-----------------------|
| Stufe5 | AS 21 2T ES | ab 034819010001 -0348 |
| Stutzen 15 mm | AS 26 2T ES | ab 034919010001 -0349 |
| | AS 28 2TS ES | ab 035019010001 -0350 |



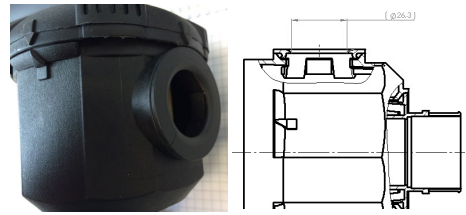
| | | |
|---------------|------------------|-----------------------|
| G06305023 | As 53 BG RB | ab 014200303001 -0142 |
| Stutzen 45 mm | AS 21-165/3 | ab 010901303121 -0109 |
| | AS 21 2T KAT | ab 020208040001 -0202 |
| | AS 26 AH 9/3 | ab 012108100001 -0121 |
| | AS 26 AH 9/3 KAT | ab 020008020001 -0200 |
| | AS 28 2T KAT | ab 020108202001 -0201 |
| | AS 65 2T KAT | ab 019908020001 -0199 |



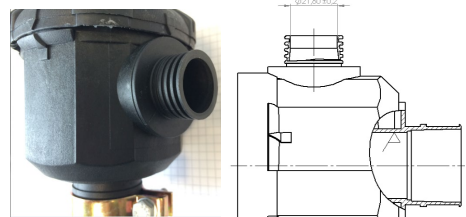
| | | |
|---------------|---------------------|-----------------------|
| G00605051 | AS 65 2T ES | ab 027115040001 -0271 |
| Stutzen 15 mm | AS 63 2T | ab 027015120001 -0270 |
| FASE | AS 28 2T ES | ab 027916070001 -0279 |
| | AS 26 2T ES | ab 027716070001 -0278 |
| | AS 53 2T ES 4 WD RB | ab 030517050001 -0305 |
| | AS 53 2T ES 4 WD | ab 030417060001 -0304 |
| | AS 531 2T ES | ab 030717060001 -0307 |
| | AS 531 2T ES | ab 031217080001 -0312 |



| | | |
|---------------|--------------------|-----------------------|
| G00605054 | AS 65 2T ES | ab 035219010001 -0352 |
| Stufe V OS | AS 510 2T ES | ab 034219010001 -0342 |
| Stutzen Flach | AS 510 2in 1 2T ES | ab 034119010001 -0341 |
| | AS 531 2T ES | ab 034419020001 -0344 |
| | AS 53 2T ES 4WD RB | ab 033919010001 -0339 |
| | AS 53 2T ES 4 WD | ab 033819030001 -0338 |



| | | |
|---------------|-----------------|-----------------------|
| G00605031 | AS 510 2T | ab 024311110001 -0243 |
| Stutzen 15 mm | AS 531 2T | ab 024412100001 -0244 |
| | AS 531 2T | ab 026313110001 -0263 |
| | AS 531 2T | ab 029816100001 -0298 |
| | AS 53 2T 4 WD | ab 020808040001 -0208 |
| | AS 53 2T 4WD RB | ab 020908040001 -0209 |



Service Bulletine sind KEINE Gewährleistungsgenehmigungen zum Aktualisieren von Maschinen.